

# The TyrrellTech Times

Volume 152

October 2024

## Mimaki™ WHAT'S NEW?

### JFX200-1213EX Mid-Format Flatbed Printer

Customers have asked for a 4' x 4' UV flatbed printer for years... and now it is here! The Mimaki JFX200-1213 EX medium-format UV-LED flatbed printer is engi-



needed for small to medium volume production, offering wide-format printing capabilities in a compact footprint. It meets the needs of print service providers and in-house print shops with limited space, delivering high-quality outputs across various applications,



including textured surfaces, ADA-compliant signage, and jig workflows.

This printer's compact medium format design enables businesses to expand their production capabilities without requiring the space of a traditional wide-format flatbed printer.

The JFX200-1213 EX

uses high versatility inks for printing to a wide range of rigid and flexible surfaces, and is capable of producing 2.5D textures and ADA signage.

Whether your need is 18"x 24" signs or jig printing, this flatbed printer is a step up into the world of direct to substrate printing.

Call/email to learn more- 888-865-0300, info@tyrrelltech.com



Sparkle Media & New Vinyl Cutters.....	Pg 2
Mimaki DTF and Other Cool New Tech.....	Pg 3
Gravotech Galvo & Universal's New VersaLaser.....	Pg 4

## Protect Your Production Hardware From Storms, Power Surges & Static



Do you find yourself tired of wondering if you will lose power during storm season? Are you using an excessive amount of moisturizer to keep your hands from feeling like sandpaper as the weather gets colder? Well, your printer needs some protection from those storms and dry air too!

Storms, power outages or surges can hurt production big time. The best way to combat this is to have your production equipment—printer and computer both—on a battery back up. This will keep your machine printing for a bit in spite of power blips or outages. It might give you just enough juice to finish the last foot of that 8 foot banner and get it out the door. Check with TyrrellTech to see which battery back up model we recommend for your printer and get it protected today!

Important to note- surge protectors are not the same... they tend to be good for one good surge and then, you are back to rolling the dice.

When it comes to dry weather, static can be a real problem in the winter and yes, that can also affect your printer. If the media running through your printer has some static charge from the dry air in your shop, it can cause the print droplets to fall in the wrong place. Get that static out of the media. We offer a static string solution for \$30 that can take care of the problem once and for all and save you lost ink and media.

Call to learn more, 888-865-0300. We are here to keep you running and profitable!



### TyrrellTech's Corny Joke of the Month-

**How do you fit 100 math teachers into a room that only holds 99?** (See Back for Punchline)

*"It is the farmer who faithfully plants seeds in the Spring who reaps a harvest in the Autumn."* -B.C. Forbes

888-865-0300 tyrrelltech.com  
9045 Maier Road, Suite A, Laurel, MD 20723  
200 Route 31 North, Suite 109, Flemington, NJ 08822  
2400 W. Copans Road, Unit 8, Pompano Beach, FL 33069  
2815 Directors Row, Suite 600, Orlando, FL 32809

## TYRRELLTECH TRAINING



**TyrrellTech**  
Digital Printing Systems

Back to School Training Tuesdays

**Laser Engraving Possibilities**  
Have a laser engraver or want one? Find out more about what it can do to expand your business-- custom cutting, marking and endless personalization!  
Tuesday, October 1, 10:00 am - 12 pm

**Adobe Illustrator 101**  
Adobe Illustrator is a powerful tool in this industry. Spend time learning some basic navigation of the software to give you an introduction to Adobe.  
Tuesday, October 8, 10 am - 12 pm

**IN PERSON**

You MUST RSVP - Seats are Limited! 888-865-0300 or info@tyrrelltech.com

Email [info@tyrrelltech.com](mailto:info@tyrrelltech.com) to register!

## OCTOBER OPEN HOUSE IN MARYLAND



**TyrrellTech** *Oktoberfest*

**Wednesday October 16**  
**10:00-3:00**  
**9045 Maier Road, Suite A, Laurel, MD**

**Brats · Beverages · Brainstorming · Bavarians**  
(product demos & savings, too...  
but that doesn't start with B...)

Email [info@tyrrelltech.com](mailto:info@tyrrelltech.com) to register!

## SEE THAT SPARKLE...

GF 767 Sparkle Holographic is a printable media designed to make any graphic stand out. Instantly enhance any product or surface the film is applied to with its rainbow iridescence and sparkling glitter texture that changes with light and perspective. The durable 6.0 mil thick film makes for easy application and is coated with a permanent acrylic pressure-sensitive adhesive. It works great for decals, point-of-purchase, retail displays, packaging, and holiday graphics. The film accepts a variety of solvent-based, eco-solvent, latex, and UV curable inks common to wide format digital printing systems.



Available in these sizes:

**30" x 75ft - \$198.95**

**54" x 75ft - \$374.95**

**60" x 75ft - \$396.95**

**30" x 150ft - \$377.95**

**54" x 150ft - \$714.95**

**60" x 150ft - \$755.95**

Call 888-865-0300 or email [customerservice@tyrrelltech.com](mailto:customerservice@tyrrelltech.com)

## COLEX FINISHING SOLUTIONS

### The Sharpcut 1732 Flatbed Cutter



The Colex Sharpcut Digital Flatbed Cutter is an exceptionally affordable cutter for those looking to grow their business. This complete turnkey solution will help automate the print service provider's workflow and reduce costs associated with the finishing process of large format goods. This will open the doors to new oppor-

tunities, reduce costs, and help increase production while tapping into new revenue streams.

The Colex Sharpcut is a powerful and versatile cutting system with:

- \* Increased Acceleration & Cutting Speeds
- \* Automated Finishing System
- \* Universal Triple Tool Head
- \* Vision Registration System & Camera
- \* Energy Efficient 6-Zone Vacuum System
- \* Solid Steel Welded Frame
- \* Precision Balanced Aluminum Rollers

Call 888-865-0300 or email [info@tyrrelltech.com](mailto:info@tyrrelltech.com) to see one in action today- the virtual demos that Colex can host are awesome!

## Graphtec's New CE8000 Series

Introducing the NEW Graphtec CE8000 Series, the go-to solution for boosting production efficiency for Signage and Vinyl Graphics, DTF Apparel, PRINT & CUT, POP & Packaging, Automotive Markets, and more.



Compared to its predecessor, the CE7000, the CE8000 boasts Enhanced Rigidity for better feeding and cutting performance.

New Wireless LAN capability adds convenience and flexibility, allowing seamless connectivity in various work settings. Plus, it's equipped with the reliable Registration Mark Sensing System (ARMS) carried over from the CE7000 for precise operation.

Supercharge your Production Capabilities with the Graphtec CE8000 Series The Perfect Solution for Streamlined Workflows with Exceptional Results. Call to learn more- 888-865-0300!

# Mimaki™ WHAT ELSE IS NEW?

## THE DIRECT TO FILM TRAIN...

### Mimaki's TxF150 & TxF 300 Direct to Film Printing Solutions

TxF150-75 is a reliable, high-quality printer that incorporates Mimaki's technologies based on the concept of "safety and stability". The DTF printer is designed with a focus on stable quality, incorporating functions to prevent "ink ejection failure" and "white ink clogging," which have been major issues for DTF printers. This printer is equipped with the newest version of MCT (Mimaki Circulation Technology) that controls sedimentation by constantly circulating the white ink.



And now... The new TxF300-75 has been shown to increase productivity by 300% compared to the existing model, further setting Mimaki apart as a leader in textile and apparel printing solutions. Embodying the same core functionalities as the TxF150-75, the TxF300-75 promises safe and stable operation while increasing productivity. Call TyrrellTech to see one in person!

#### Lineup of two models in series with different productivity

Pro-model and Entry-model - 2 models are available for customers to choose according to the productivity and investment amount.

\*Print condition: H 280 mm x W 360 mm print graphics are printed on W 800 mm DTF film side by side

	<b>Pro-model TxF300-75</b>		<b>Large T-shirts 66 pcs/h</b> Production mode 720*720 6P 7.5 ml/h
	<b>Entry-model TxF150-75</b>		<b>Large T-shirts 22 pcs/h</b> Production mode 720*720 9P 2.6 ml/h

## DTF Film Slitter Solution

TyrrellTech is always on the lookout for hardware that can bring efficiency to your production space. We saw this DTF slitter machine and said, YES, that would be great for some of our customers.

This XY DTF cutter machine can be the final step in your assembly line of machines. Print with a DTF printer, feed the print through a shaker to apply and cure the adhesive and finally, feed it through this X and Y slitter to cut the prints into individual pieces for easy pressing onto the final apparel product.

Pretty cool, right? And you can get into it for around \$10K...

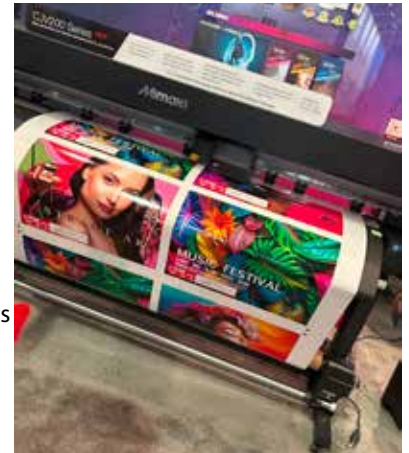
Call to learn more- 888-865-0300!



## Mimaki CJV200 Print/Cut Series

Mimaki has been a player in the wide format print/cut world for some time, now. We at TyrrellTech sell both Roland and Mimaki print/cut solutions, and both brands have made customers lots of money over the years.

All new from Mimaki, offering high value in a small footprint, the CJV200 provides indoor and outdoor durable printing with an integrated cutter and easy-to-use software for the perfect stand-alone bundle.



Customers can easily produce indoor and outdoor prints on a large selection of media with 'one printer to do it all' versatility in a small footprint.



Enjoy outstanding quality and productivity, plus the industry's best outdoor durability at an attractive price point. Users can print a wide range of applications using this

complete system with print & cut device, software, and a range of inks.

The CJV200 is easy to use with paired Rasterlink RIP software for extreme accuracy when creating instant decals and large wall graphics. Print with outstanding quality and productivity at an attractive price point.



Select from three model widths to suit your production needs: CJV200-75 30" printer/cutter- \$8,995 + inks, install, shipping; CJV200-130 54" printer/cutter- \$10,995 + inks, install, shipping; CJV200-160 64" printer/cutter- \$11,995 + inks, install, shipping

These CJV200 printers bring it all together- Mimaki Core Technologies deliver exceptional results, economically, and with maximum productivity.

Call or email to learn more- 888-865-0300 or info@tyrrelltech.com



## ENGRAVER CORNER

### Gravotech Galvo Lasers



Gravotech's powerful and high-quality industrial Fiber Laser engraver performs precise markings quickly. Compact, with great communication links and simple to integrate in a manufacturing process, it is the perfect fiber laser marker for metal and plastics.



#### COMPACT DEEP LASER ENGRAVING

The heavy-duty design, based on a cast aluminum structure, and high-quality optical components guarantee strength and low maintenance. Whether integrated in a production lines or robotic cell. The integrated laser implementation is easy in all mounting positions, the laser can be oriented to the part surface to significantly reduce installation times and tooling costs.



#### INDUSTRIAL LASER

Equipped to meet the needs of Industry 4.0, the fiber laser engraver for metal, can use many network and fieldbus protocols allowing full compatibility with all PLCs brands to ensure quick and cost-effective integration.

#### POWERFUL FIBER LASER

This deep laser marking machine is available in several powers; 20W, 30W and 50W. 20W is adapted for most applications for surface marking, 30W is the solution for fast and high-contrast markings, and 50W is the most suitable solution for deep laser engraving.



## All New VLS3.60ES From UNIVERSAL LASER SYSTEMS



Something new is coming from Universal Laser System this fall... they are revamping their VersaLaser model and you are going to be excited to see what's next.

This new VLS3.60ES

Engraving System hangs its hat on having both ease of operation AND robust capabilities.

The VLS3.60ES has a new control software - Laser System Manager (LSM). It also has a Camera Vision System and does direct import of common graphics file formats (PDF, DXF, BMP, JPG, Tiff, PNG, SVG and G-Code). This ULS VLS model supports numerous graphics packages, including Corel, Adobe, Inkscape, AutoCAD, and more.

No other compact laser system on the market provides this level of safety. safety features include E-Stop, Patented Fire Suppression option, Shatter resistant laminated Safety Glass, All metal enclosure with labyrinth seals, Air Cooled, Low Voltage, Metal Laser, Redundant Safety Interlocks, Over-Temperature Alarm(s) and User access login controls.



The top Door Camera, Fire Suppression support and New

X-axis cover are now standard on every system. This is an exciting new addition to the ULS line up!

Call 888-865-0300 or email info@tyrrelltech.com to learn more!

## ONLINE CATALOG

Living in a pandemic and post pandemic world made it hard to trust prices would hold for long, so we haven't printed a catalog in a while. But, we have GREAT news! We have an online version of our catalog that you can peruse, and we will be able to keep it more current than the print version. Check it out here!

TyrrellTech  
 Digital Printing Systems  
 catalog



TyrrellTech's Corny Punchline of the Month-  
**You carry the one.**



**Some TyrrellTech October Birthdays to celebrate!**  
**Tracey Schaub, 10/13- Maryland Sales Manager**  
**Eric Cohen, 10/18- Orlando Printer Sales & Service**  
**Craig Tyrrell, 10/23- The Head Honcho**

